



MacBook Core 2 Duo Hard Drive Replacement

Tools used in this guide

- [Coin](#) (1)
- [Phillips #00 Screwdriver](#) (1)
- [T8 Torx Screwdriver](#) (1)

Parts relevant to this guide

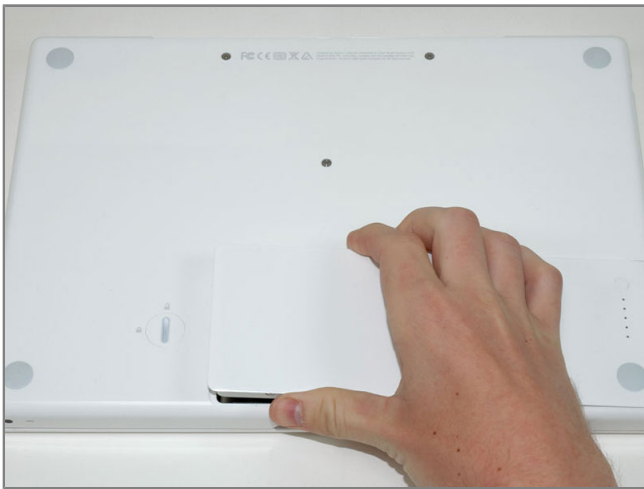
- [500 GB 5400 RPM Western Digital SATA Hard Drive \(New\)](#) (1)
- [500 GB 7200 RPM Seagate SATA Hard Drive \(New\)](#) (1)
- [750 GB 7200 RPM Seagate SATA Hard Drive \(New\)](#) (1)
- [MacBook Hard Drive Bracket](#) (1)

You can install hard drives up to 9.5mm thick.



Step 1 - Battery

- Use a coin to rotate the battery-locking screw 90 degrees clockwise.



Step 2

- Lift the battery out of the computer.



Step 3 - Memory Cover

- Unscrew the three evenly-spaced Phillips screws from along the rear wall of the battery compartment.
- The screws are captive to the metal memory cover so you cannot lose them.





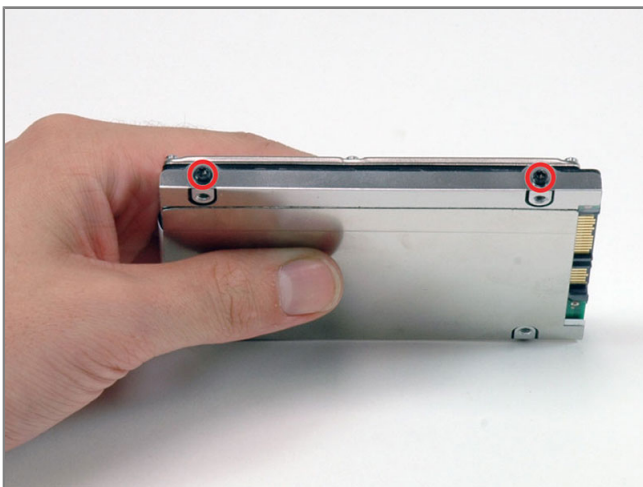
Step 4

- Rotate the L-shaped memory cover so it clears the battery compartment opening and lift it up and out of the computer.



Step 5 - Hard Drive

- Grasp the white plastic tab attached to the hard drive and pull it to the right, removing the hard drive from the computer.
- The hard drive goes back into its compartment with the label facing down.



Step 6 - Hard Drive Replacement

- Remove the two black T8 Torx screws securing the silver bracket to the hard drive.



Step 7

- Rotate the hard drive and remove the two black T8 Torx screws on the other side of the drive.



Step 8

- Lift the silver metal hard drive bracket off the hard drive.
- You'll need to transfer this metal bracket to your new hard drive.
- If you are installing a new hard drive, we have an [OS X install guide](#) to get you up and running.



To reassemble your device, follow these instructions in reverse order.

This document was last generated on Mar 3, 2011.